

# *Electroflo*



## **Learning Curve for Holiday Inn Express:**

A case study in saving water,  
without compromising on style



# Holiday Inn Express

**Thomas Dudley's Electroflo Curve infra-red taps are providing a stylish water and energy saving solution at the Holiday Inn Express, Limehouse.**

**Located in the heart of London's Docklands, the hotel boasts 150 bedrooms as well as excellent conferencing facilities and is part of the dynamic and forward thinking Splendid Hotel Group.**



## Stylish looks, impressive results

Dudley Electroflo Curve taps were installed in the hotel's public washrooms in 2010 as part of an upgrade and in support of the Splendid Hotel Group's strategy to use energy saving technology.

Lalji Bhura, Group Maintenance Manager explains *"when we looked to refurbish the hotel's public toilets, we wanted to use products that saved water and energy but were also visually appealing. We therefore decided to replace the old tired looking three hole basin taps and the Curve has helped to complete the transformation. In addition, the new taps are clearly helping us save water and reduce operating costs"*.

## Proven to save water

Electroflo Curve taps combine hygienic touch-free operation with proven water-saving technology. They are activated by a discrete infra-red sensor and shut off when hands are removed from in front of the sensor. Water delivery also stops automatically after 90 seconds, a flow time that can be adjusted.



This saves water by delivering a precise, pre-determined flow of water and also prevents the wastage and potential damage that can occur when traditional taps are left running after use.



## Clear benefits

Lalji added *"the Curve taps have enhanced the appearance of our public toilets, improved hygiene and are helping us to realise significant water savings. I am delighted with our choice and further installations are planned for the future"*.

## Potential water savings that can be achieved

	Standard one hand mixer tap	Electroflo Curve infra-red tap
Uses per day tap	100 uses	100 uses
Water used per use	9 litres	3 litres
Total water used per day	900 litres	300 litres
Total water used per year	328,500 litres	109,500 litres
Water saved per year	N/A	219,000 litres

(Assumes each tap is used 100 times per day. Savings shown are for illustrative purpose only).

### State of the art

Like all Dudley Electroflo taps, the Curve is packed with state of the art features.

Its classic swan neck design and chrome plated finish add the perfect finishing touch to any washroom. The Curve delivers cold or premixed warm water, making it ideal for public washrooms whilst a manual mix option is available for use in individual guest bathrooms.



Electroflo taps have a robust brass body and with no moving parts, provide a vandal resistant solution. The detection range, flow time and other key performance characteristics can be simply adjusted either manually or using the innovative remote control.

### Electroflo range

The Electroflo range of electronic bathroom products also includes Linear, Contemporary, Contemporary Light Touch and Hygiene taps, urinal flushing controls and ground-breaking WC flushing controls that deliver water-saving dualflush through a single infra-red sensor.



Please refer to our Specification Product Range catalogue for further details or alternatively visit: [www.thomasdudley.co.uk/specification](http://www.thomasdudley.co.uk/specification).

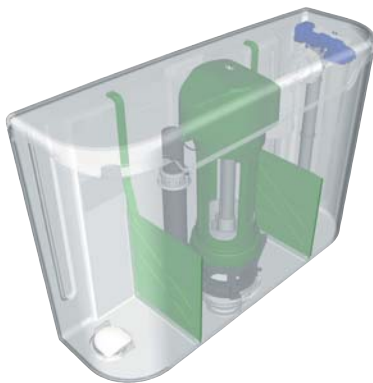
# Thomas Dudley Ltd. envirofacturing™



- We have attained BS EN ISO 14001, the recognised standard for environmental management systems
- We employ best practice and lean manufacturing principles throughout the organisation to maximise manufacturing efficiency
- We invest heavily in technology designed to reduce our emissions and energy consumption
- We manufacture in the UK and not overseas, helping to reduce the environmental cost and carbon footprint of transportation
- Our catalogues are printed on recycled paper by local printers
- We recycle our waste paper by shredding it on-site and re-use it for packing purposes
- Our foundry converts scrap iron into value added products to provide the ultimate recycling service
- Our plastics division recycles waste plastic produced during production
- We manufacture and strongly promote the use of water-saving bathroom products. To enable these to be easily identified by specifiers, our packaging and literature are clearly labelled with Water Technology List and Bathroom Manufacturers Association Water Efficient Product branding
- Water-saving dualflush WCs are installed throughout our premises



Printed on recycled paper



## Thomas Dudley Ltd.

P.O. Box 28, Birmingham New Road, Dudley, West Midlands DY1 4SN  
 Tel: 0121 530 7000 (Sales)    0121 557 5411    Fax: 0121 557 5345  
 E-mail: [sales@thomasdudley.co.uk](mailto:sales@thomasdudley.co.uk)    [www.thomasdudley.co.uk](http://www.thomasdudley.co.uk)

We are a quality assured company to:



BS EN ISO 14001  
 Cert. No. EMS72025



BS EN ISO 9001  
 Cert. No. FM01025  
 Cert. No. FM0614



OHSAS 18001  
 Cert. No. OHS 98327