



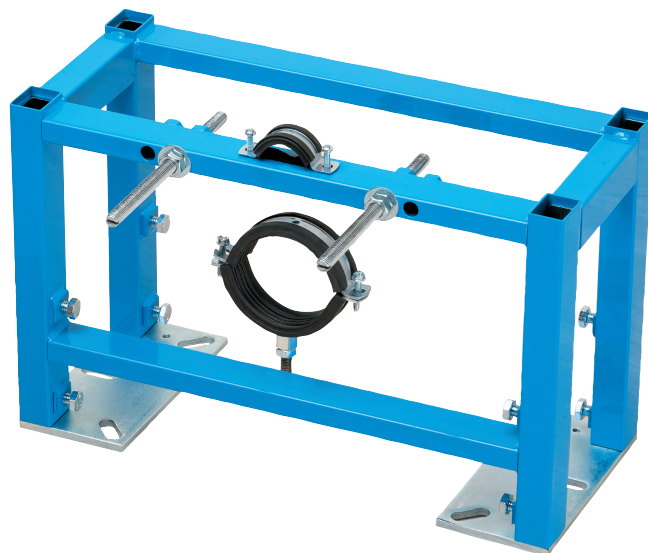
#### Applications

Free-standing wall-hung WC pan support frame designed for use where no solid rear wall fixing is available.

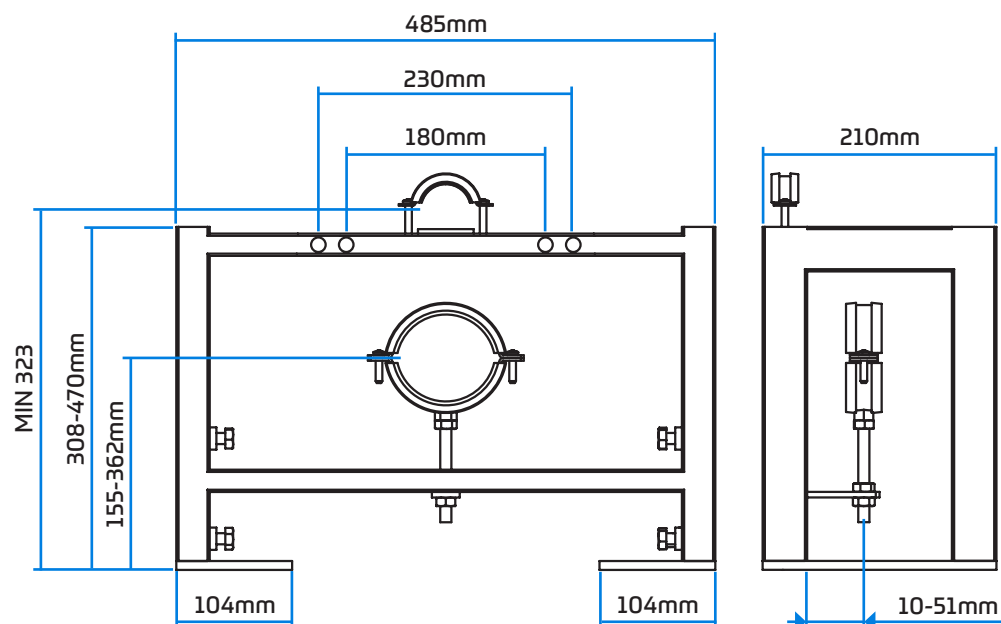
Can be used against flat walls and in corners in domestic or commercial environments.

#### Features

- ~ Sturdy floor fixing brackets remove the need for rear wall fixing
- ~ Legs adjust to offer WC pan height fixing flexibility
- ~ Strong steel square hollow construction
- ~ Blue powder coated finish & zinc plated wall & floor brackets
- ~ Flushbend and WC pan connector clamps
- ~ 5L & 4L mono flush is achievable



#### Dimensional Data



#### Technical Data

Fixing orientation	Floor fixed
Code	316233

