

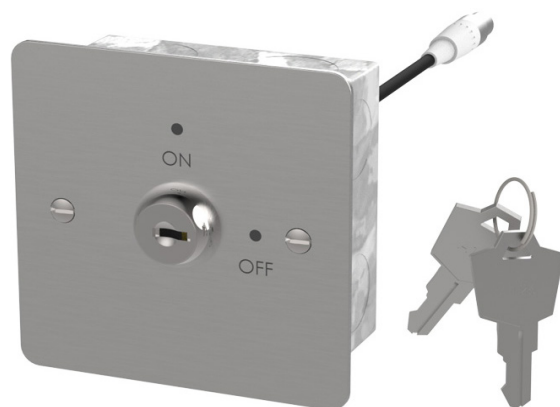


Applications

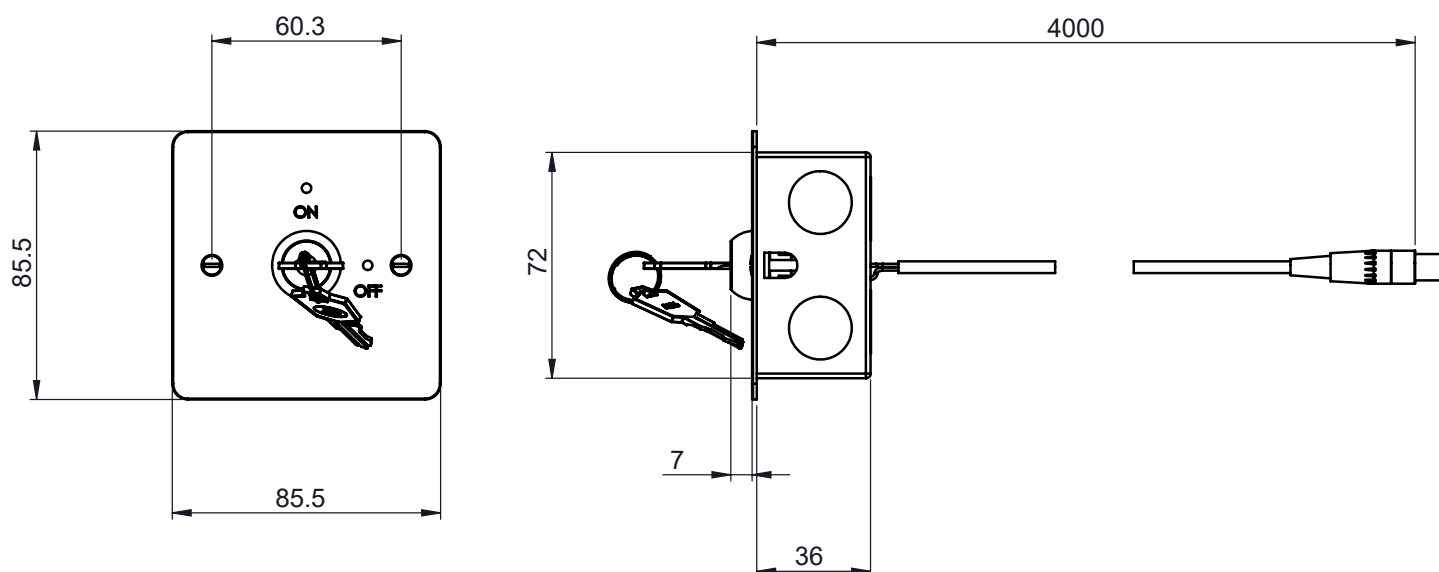
Used in combination with our Washroom Control System; a remote key switch is available if required for isolation of all functionality and can be operated remotely and securely.

Features

- ~ This Key operated switch is mounted into a flat Stainless steel plate which is printed 'ON and OFF' and is suitable for installation to a standard 1 Gang Metal, Dry-line or Patress box
- ~ Comes with a 1 gang x 35mm deep metal clad patress box, with two switch plate mounting screws and two keys
- ~ The auxiliary input cable is 4M long
- ~ Keys are universal across all switches



Dimensional Data



Technical Data

Operation	Key Switch
Operating Voltage	12VDC
Connection Size	Standard 1 gang 60.3mm centres
Product Code	374579