



#### Applications

Wall-hung WC pan support frame designed for use against flat walls and in corners; ideal for most domestic and commercial applications.

#### Water Saving

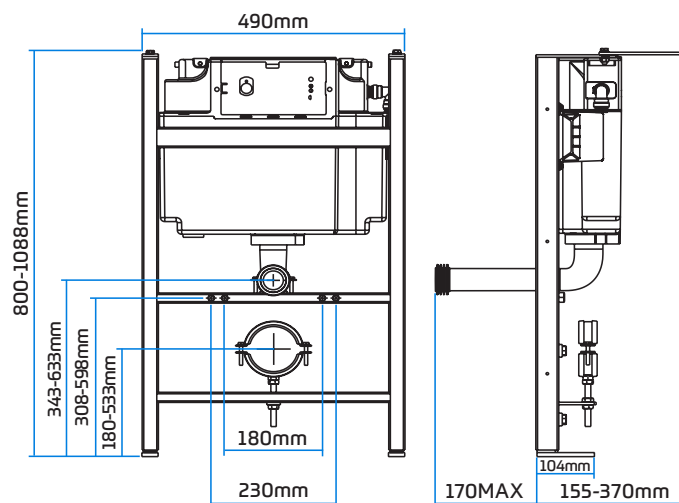
- ~ Vantage cistern
- ~ Provides 6/4 litre dualflush and quickly and easily converts before or after installation to 5/3 or 4/2.6 litre dualflush
- ~ Delay fill Hydroflo inlet valve only allows cistern to start refilling once flushing is complete, saving up to 0.5L of drinking water per flush
- ~ European Water Label Scheme registered
- ~ Supports BREEAM

#### Features

- ~ Fixed height frame, legs adjust to offer WC pan height fixing flexibility
- ~ Wall and floor fixing brackets can be fixed through 180° and 360° respectively to provide further flexibility
- ~ Strong steel square hollow construction
- ~ Blue powder coated finish & zinc plated wall & floor brackets
- ~ Passes 4kN load test based on EN 997
- ~ Flushbend and WC pan connector clamps
- ~ Integral factory fitted Dudley Vantage cistern
- ~ 5L & 4L mono flush is achievable



#### Dimensional Data



#### Technical Data

Operation	Pneumatic
Pneumatic tube length	750mm
Inlet	Side
Outlet	Valve
Fixing orientation	Wall and floor fixed
Load capacity	Tested to 4kN
Product Code	323063 - Illusion V frame - with jacket no button or plate 323139 - Illusion V frame - non jacket no button or plate

