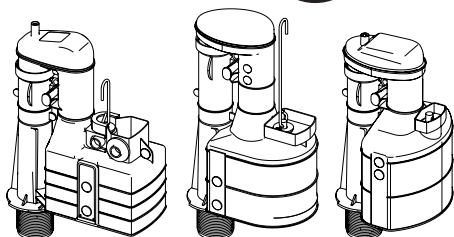


# Dudley



## TURBO SYPHONS

2-PART QUICK SERVICE SYPHONS



### IMPORTANT NOTES

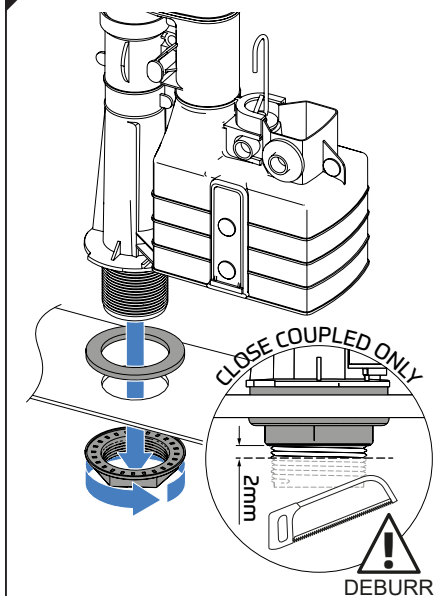
Before installation flush supply pipes and ensure cistern is clean and free from debris.

No sealing compound, paste, flux or solvent to be used in contact with plastic or rubber surfaces to avoid damage. Rubber washers will provide adequate seal. PTFE tape may be used on threads. No chemical block/additive to be used in this cistern.

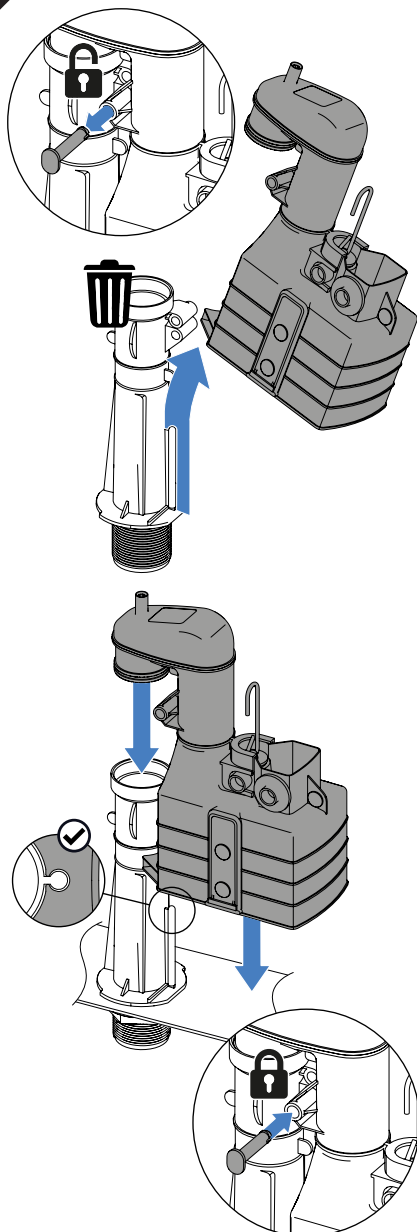
Do not over-tighten plastic fasteners. Hand tight + ¼ turn should provide an adequate seal (8Nm recommended).

**All syphons** have an internal overflow.

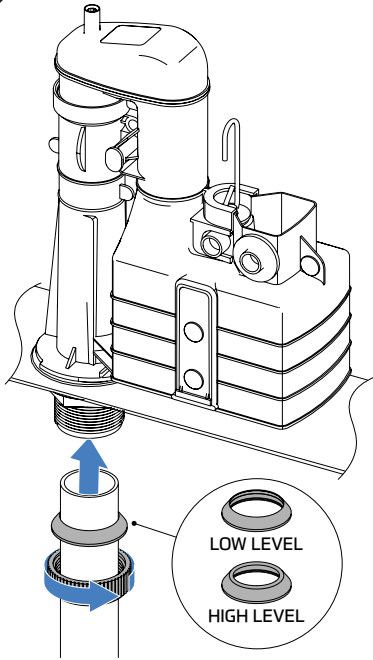
### 1a NEW INSTALL



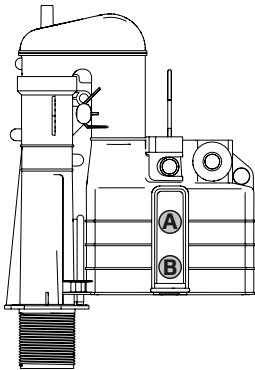
### 1b RETRO-FIT



2



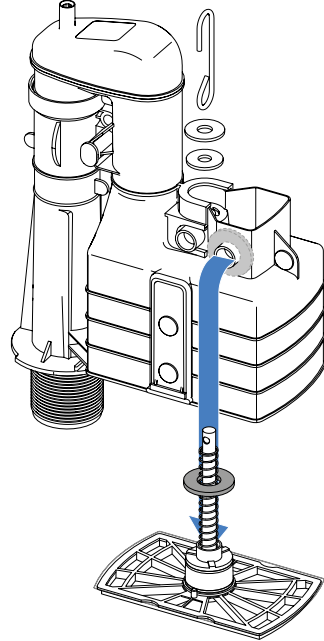
3



FLUSH VOLUME	CONFIGURATION
MIN	Only 'A' OPEN
MID	Only 'B' OPEN
MAX	All positions CLOSED

4

#### MONO FLUSH CONVERSION (IF REQUIRED)



5

#### Final Installation Checklist

- ~ Check moving components are not obstructed and move freely.
- ~ Check connections are secure and fixed correctly.
- ~ Connect and turn on water supply.
- ~ Check installation for leaks.
- ~ Check water level aligns to that marked on cistern.
- ~ Hold the valve open (float down) to check internal overflow operation is sufficient.
- ~ Installer to ensure cistern complies with UK water regulations.
- ~ Visit [thomasdudley.co.uk/plumbing](https://www.thomasdudley.co.uk/plumbing) for service & maintenance information.