



Applications

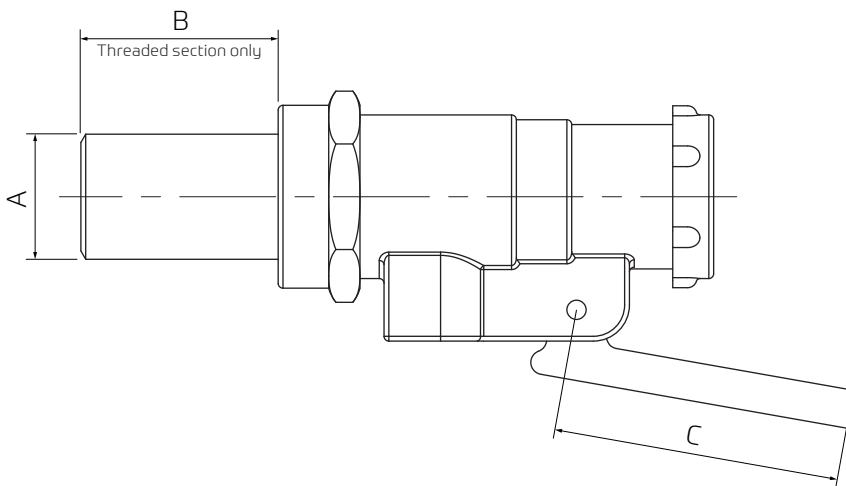
Cistern/tank inlet valve. For use in both domestic and commercial environments.

Features

- ~ Brass float operated
- ~ Ballvalve supplied with removable seats and nylon backnuts
- ~ BS1212 Part 1



Dimensional Data



Technical Data

	(A) Inlet	(B) Tail Length	(C) Lever Length	Seat	Piston	Float Thread	Rec. Float Size	Back Nuts	Max P.	WRAS Approved
High Pressure										
366802	½" BSP	1 ¼"	8 ¾"	⅛" Acetal	Acetal	5/16" BSW	4 ½"	Acetal	20 bar	Yes
366818	½" BSP	2"	8 ¾"	⅛" Acetal	Acetal	5/16" BSW	4 ½"	Acetal	20 bar	-
366823	½" BSP	3"	8 ¾"	⅛" Acetal	Acetal	5/16" BSW	4 ½"	Acetal	20 bar	Yes
Low Pressure										
366838	½" BSP	1 ¼"	8 ¾"	⅜" Acetal	Acetal	5/16" BSW	4 ½"	Acetal	20 bar	-
366847	½" BSP	2"	8 ¾"	⅜" Acetal	Acetal	5/16" BSW	4 ½"	Acetal	20 bar	-
366851	½" BSP	3"	8 ¾"	⅜" Acetal	Acetal	5/16" BSW	4 ½"	Acetal	20 bar	-